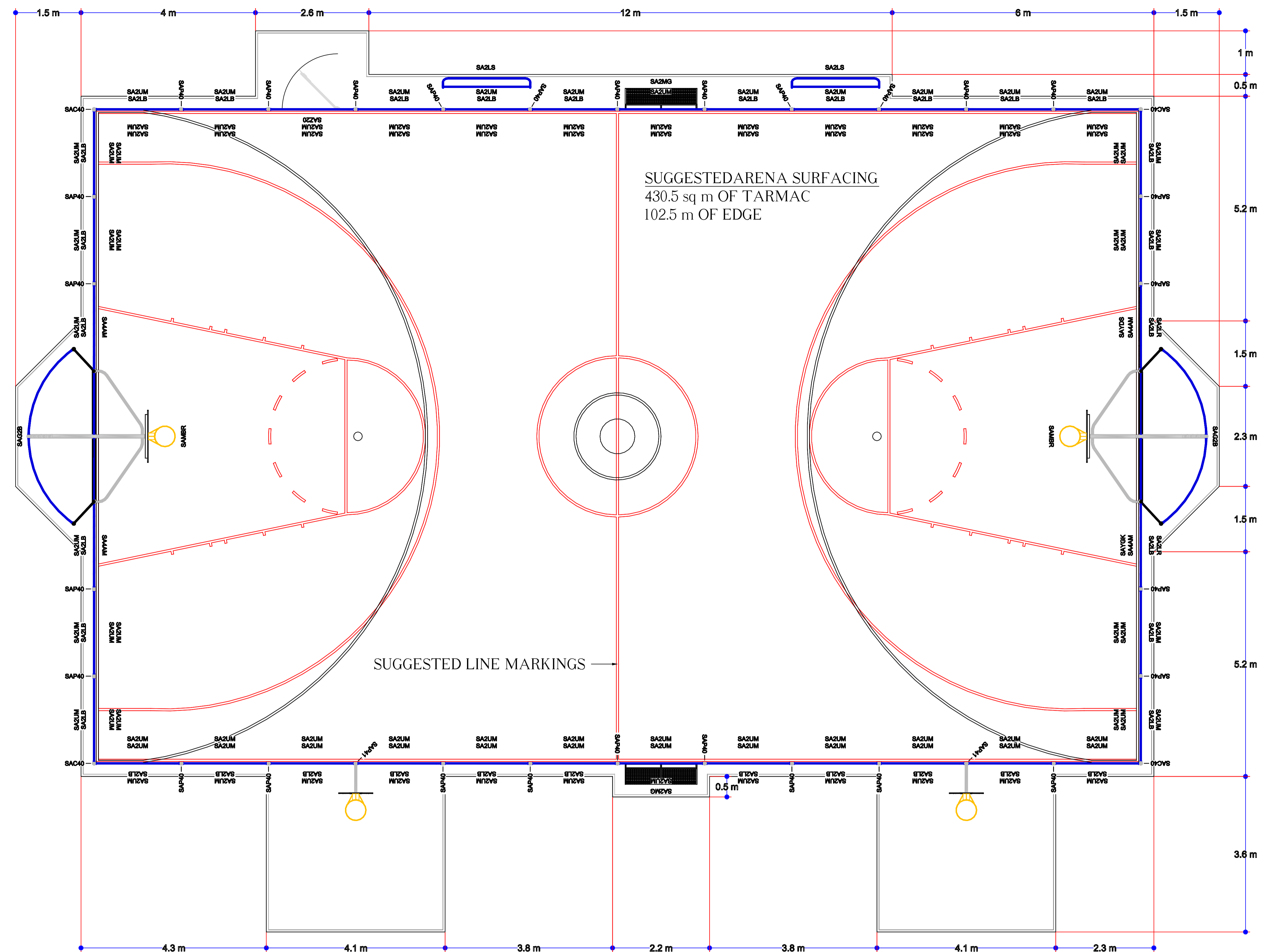


NOTES

DIMENSIONS SHOWN FOR TARMAC ARE TAKEN FROM THE OUTSIDE OF THE PRE-CAST CONCRETE EDGE.



SUGGESTED ARENA SURFACING  
430.5 sq m OF TARMAC  
102.5 m OF EDGE

SUGGESTED LINE MARKINGS

**Components List**  
ARENA BOSTON (SA-BO)  
Drawing No:39544\_Item1

Code	Description	Qty	Weight (kgs)	Extended Concrete
SA2LB	LOWER BAR FRAME 2M	33	1,306.80	0.00
SA2LR	REBOUND FRAME 2M	2	57.20	0.00
SA2LS	SEAT (LEAN BACK)	2	70.00	0.53
SA2MG	MINI GOAL	2	124.66	0.00
SA2UM	UPPER MESH FRAME 2M	97	3,065.20	0.00
SA44M	4.0M HIGH STEP DOWN PNL	4	217.04	0.00
SAC40	4.0M HIGH CORNER POST	4	1,720.00	0.00
SAG2B	GDAL SECTION	2	708.00	2.02
SAMBR	1.2M REACH BOARD & HOOP	2	188.94	0.00
SAP40	4.0M HIGH POST	28	1,204.00	2.77
SAP41	4.0M PST + 1 WAY PRCT BB	2	134.58	0.20
SAYDS	DOUBLE SCORE PANEL	1	22.60	0.00
SAYGK	BEAT THE GOAL KEEPER GFX	1	22.60	0.00
SAZ20	ZAUN 1.2m S/C GATE 2m HT	1	93.00	0.20
		181	8,934.62	5.72

ARENA STEELWORK + POLYATHYLENE COLOURS TO BE CONFIRMED WITH ORDER  
REFER TO ARENA INSTALLATION INSTRUCTIONS FOR COMPONENT ID AND INSTALLATION



REVISION

04/10/07 - Original	ISSUE A
04/06/10 - Amendment by J.F. Check by N.B. Border amended for international use.	ISSUE B

CUSTOMER

PROJECT

TITLE

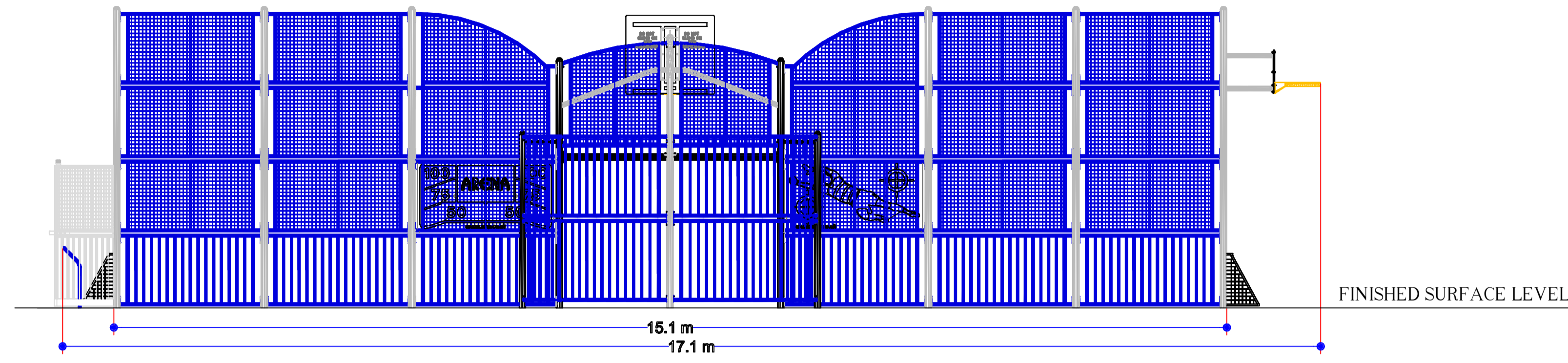
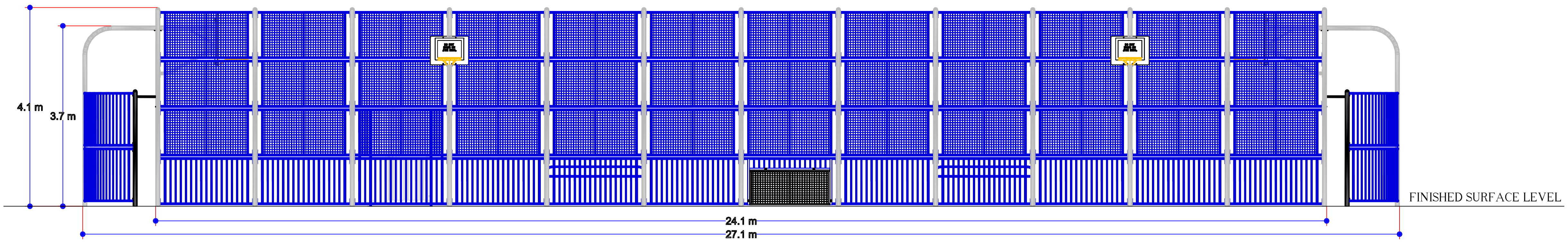
ARENA SPORTS SYSTEM  
BOSTON SA-BO 24m x 15m

DATE	04/10/07	SCALE	1:50 @ A1
DRAWN BY :	N.B.	CHECKED BY :	J.C.

DRAWING No. 39544 ISSUE B

SHEET 1 OF 2





**ARENA**  
Sports SYSTEM

NOTES  
DIMENSIONS SHOWN FOR EQUIPMENT ARE TAKEN FROM THE OUTERMOST FACE.

REVISION

CUSTOMER

PROJECT

TITLE  
ARENA SPORTS SYSTEM  
BOSTON SA-B0 24m x 15m

DATE 04/10/07 SCALE 1:50 @ A1  
DRAWN BY : N.B. CHECKED BY : J.C.

DRAWING No. 39544 ISSUE B

SHEET 2 OF 2